

KCET

KCET STUDIOS
4401 SUNSET BLVD
HOLLYWOOD, CA
90027
(323)953-5271

UPDATED: 11.15.09

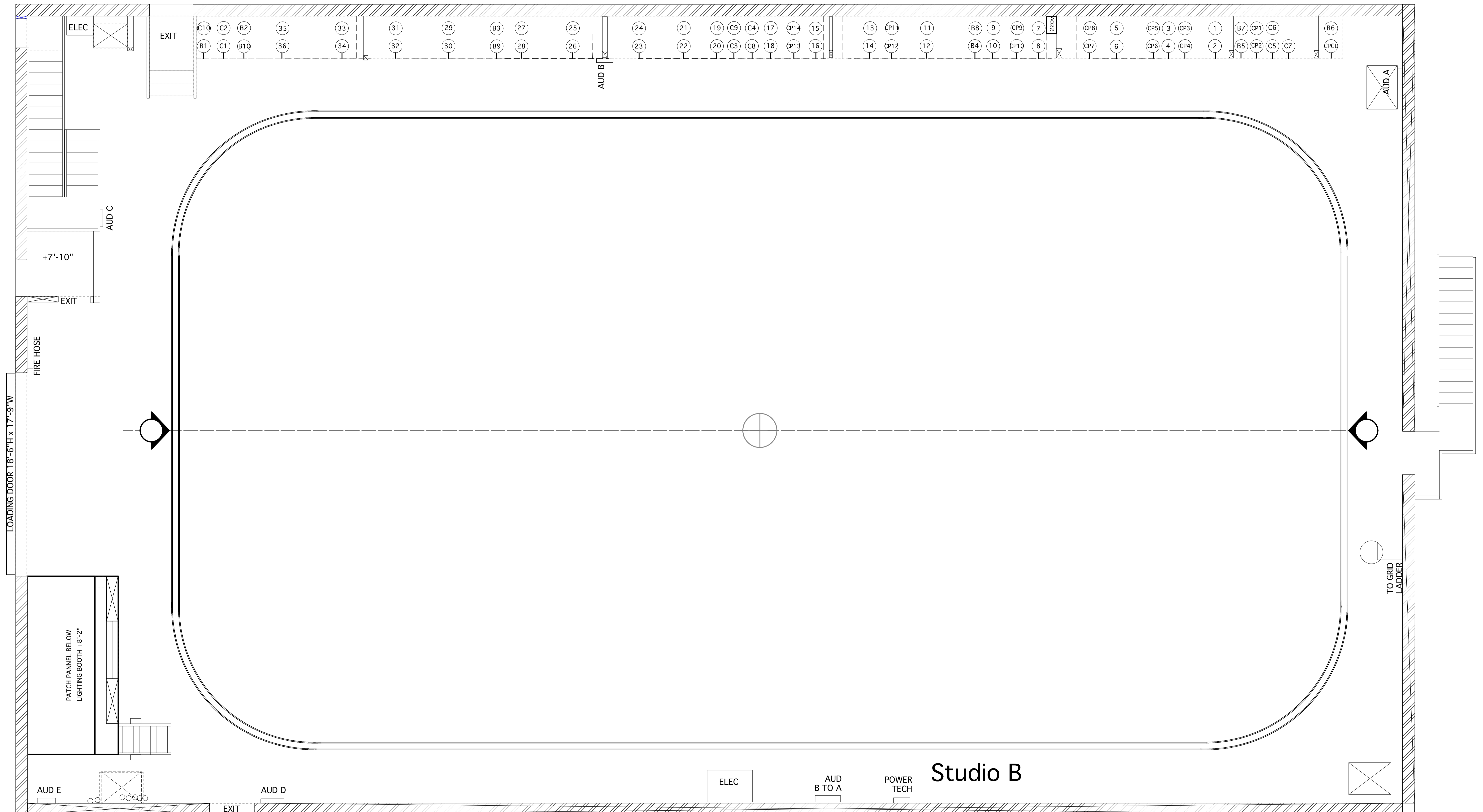
DRAWING:
Show Date:
Show Title:

DRAWN BY: M. SCOTT MOSES

GRID HEIGHT: 24'-11 1/4"
HIGH TRIM: 21'-1 1/4"
LOW TRIM: 5'-6"

STUDIO B

SCALE: 1/4"=1'-0"



LOADING DOOR 18'-6\"

+7'-10\"

PATCH PANNEL BELOW
LIGHTING BOOTH +8'-2\"

Studio B



THE DRAWINGS PRESENTED HERE ARE ONLY VISUAL CONCEPTS. ANY NOTES ON CONSTRUCTION ARE ONLY SUGGESTIONS. THE DESIGNER IS NOT QUALIFIED TO DETERMINE THE STRUCTURAL APPROPRIATENESS OF THE STAGE, AND WILL NOT ASSUME RESPONSIBILITY FOR IMPROPER OR UNSAFE CONSTRUCTION, USE, OR HANDLING OF ARCHITECTURE OR SCENERY HEREIN DESCRIBED. ALL MATERIALS MUST COMPLY WITH ALL FEDERAL, STATE, AND LOCAL FIRE AND SAFETY CODES.